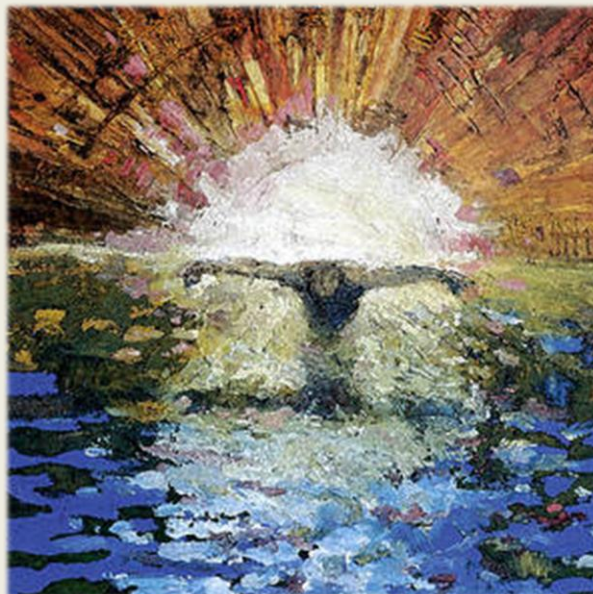


*Welcome to Roland Park Presbyterian Church.
We're glad you're here!*

May 21, 2023



*The way of Jesus is thus not a set of beliefs about Jesus...
Rather, the way of Jesus is the way of death and resurrection —
the path of transition and transformation from an old way of being...
It is about entering a relationship in the present that begins to change everything now.*

~ Marcus J. Borg



ROLAND PARK
PRESBYTERIAN CHURCH

WELCOME

*Thank you for joining us today. We hope that today's service will be meaningful for you.
You can always visit us at our website for the latest happenings and information.*

<https://www.rolandparkchurch.org/>

If this is your first time with us, you can email Pastor Mark to introduce yourself and learn more about the congregation: pastor@rolandparkchurch.org

If you would like to connect with our Christian Education Program, please email our Director of Christian Education, Shayla Redfearn: DCE@rolandparkchurch.org

To connect with our choirs, please email our Director of Music, Dr. Phillip Collister-Murray: pcollister@towson.edu

All are welcome in our worship service, including infants and children. We also have a nursery room where childcare is provided. With the exception of the first Sunday of each month, there is also an optional "Bridge to Worship" time where children may choose to leave the sanctuary with our Christian Education team to engage in an age-appropriate worship activity. It will be announced and children will be invited to come forward. They will return to the sanctuary by the end of the service.

If you have any questions or need help finding anything, please ask anyone wearing a name tag. We will be happy to help you.

AUDIOFETCH HEARING ASSISTANCE



Stream Real Time Audio to Your Personal Device

1. Download and open the free AudioFetch app from the app store on your device
2. In the sanctuary, connect your device wifi to the network: AudioFetchExpress
3. Connect your device to air pods or earbuds to listen to real time audio streaming

THE SERVICE OF THE LORD'S DAY

May 21, 2023

10:30 AM

CENTERING OURSELVES FOR WORSHIP

Prelude

Without Grace I Can't Live
Esther Lee, organ

SungEun Cho

Words of Welcome

***CALL TO WORSHIP**

Grace upon grace:

in Christ we walk in newness of life.

Step by step, practice by practice:

we let go of the old self and present ourselves to be transformed by God's righteousness.

The powers of this world are defeated:

for Christ is alive! Alleluia.

***HYMN #485**

We Know That Christ Is Raised

ENGELBERG

We Know That Christ Is Raised 485

Capo 3: (D)

(Asus) (A)

(A/G)

(D/F#)

F

Csus C

C/B^b

F/A



1 We know that Christ is raised and dies no more.
 2 We share by wa - ter in his sav - ing death.
 3 The Fa - ther's splen - dor clothes the Son with life.
 4 A new cre - a - tion comes to life and grows

(D)

(A)

(D)

(E7)

(A)

F

C

F

G7

C



Em - braced by death he broke its fear - ful hold,
 Re - born we share with him an Eas - ter life
 The Spir - it's pow - er shakes the church of God.
 as Christ's new bod - y takes on flesh and blood.

(Am)

(D)

(G)

(Em)

(Bm)

Cm

F

B^b

Gm

Dm



and our de - spair he turned to blaz - ing joy.
 as liv - ing mem - bers of a liv - ing Christ.
 Bap - tized we live with God the Three in One.
 The u - ni - verse, re - stored and whole, will sing:

1-3

(Em)

(D) (Asus) (A)

(Em)

(D)

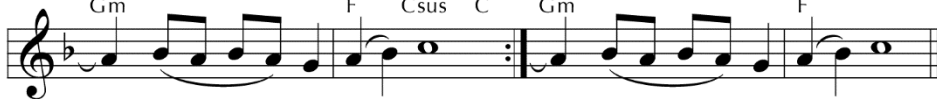
Gm

F

Csus C

Gm

F



Al - le - lu - ia!

Al - le - lu - ia!

PRAYER OF CONFESSION

You are making all things new, O God,
and in raising Christ from the dead
you defeated the powers of sin forever.
We confess that we sometimes consider ourselves dead to sin
and use that as an excuse.
We admit that the ways of this world often work for us,
and it is not easy to turn our backs on the privileges we enjoy,
even when we know your way leads to abundant life.
Knowing your forgiveness covers us with grace,
sometimes we think we can just dip in and out of those old ways,
making little tweaks while still holding on to the comfortable parts,
forgetting that they are more seductive than we realize
and soon we are trapped again and not sure we want to leave them behind after all.
Other times we think one mistake means we may as well not try anymore,
so we simply give in.
Forgive us, O God, and in the power of your resurrection Spirit re-create us.
Train our hearts and minds, hands and feet in the habits of your kingdom.
And should our practice fail,
may your grace once again set us back on your way,
committed to trying again.
We ask with hope and with trust in the One
who is forever beyond the reach of sin and death,
who brings us into new life with him day by day,
Jesus the Christ. Amen.

Time of Silent Prayer

ASSURANCE OF GOD'S LOVE

GLORIA PATRI

[adapted from Hymn #243]

BE NOT AFRAID

Glory to God

Jacque Berthier
Taizé Community
BE NOT AFRAID
adpt. P. Cellister

The image shows a musical score for the hymn 'Glory to God'. It consists of two systems of music. The first system has a treble clef and a 4/4 time signature. The melody is written in the treble clef, and the accompaniment is in the bass clef. The lyrics are: 'Glo-ry to God, And to the Son, And to the Ho - ly— Spi - rit!'. The second system also has a treble clef and a 4/4 time signature. The melody continues in the treble clef, and the accompaniment is in the bass clef. The lyrics are: 'As at the first, now and al - ways, world with-out end. Al - le - lu - ia!'. There are some musical notations like '5' above the first measure of the second system, possibly indicating a fingering or a measure number.

PASSING THE PEACE

*At this time children are invited to “Bridge to Worship”
where they will engage in an age-appropriate worship activity.
They will return to the sanctuary by the end of the service.*

WELCOMING NEW MEMBERS

We welcome you with joy in the common life of this church. We promise you our friendship and prayers as we share the hopes and labors of the Church of Jesus Christ. By the power of the Holy Spirit may we continue to grow together in God’s love and be witness to the kingdom of God here on Earth.

ANTHEM

Scottish Hymn of Praise
Chancel Choir

arr. Malcom Crawford

O Lord, I sing thy praises who art my strength and stay; My leader through life’s mazes, to bring me to thy way. Thou didst not leave me straying when I afar would go with heedless footsteps playing upon the brink of woe!

For thou, thy glory showing, mad’st me thy beauty see; thy love has been bestowing new life and joy on me. Thou grace and glory givest, thou art a sun and shield, thou only ever livest, thy words salvation yield.

PRAYER FOR UNDERSTANDING

God of liberating love, you set us free from the power of sin and death, that we might live for you. You created the world for flourishing and your abundance is for all. Bless us with the grace to continually turn toward your more excellent way. Unite us with one another in Christ that we might live to your glory. Amen.

GOD'S STORY

Romans 6: 1-14

What then are we to say? Should we continue in sin in order that grace may increase? By no means! How can we who died to sin go on living in it? Do you not know that all of us who were baptized into Christ Jesus were baptized into his death? Therefore we were buried with him by baptism into death, so that, just as Christ was raised from the dead by the glory of the Father, so we also might walk in newness of life.

For if we have been united with him in a death like his, we will certainly be united with him in a resurrection like his. We know that our old self was crucified with him so that the body of sin might be destroyed, so we might no longer be enslaved to sin. For whoever has died is freed from sin. But if we died with Christ, we believe that we will also live with him. We know that Christ, being raised from the dead, will never die again; death no longer has dominion over him. The death he died, he died to sin once for all, but the life he lives, he lives to God. So you also must consider yourselves dead to sin and alive to God in Christ Jesus.

Therefore do not let sin reign in your mortal bodies, so that you obey their desires. No longer present your members to sin as instruments of unrighteousness, but present yourselves to God as those who have been brought from death to life, and present your members to God as instruments of righteousness. For sin will have no dominion over you, since you are not under law but under grace.

For the Word of God in scripture,
For the Word of God among us,
For the Word of God within us,
Thanks be to God.

MESSAGE

The Way of Jesus

Pastor Mark & Dr. Redfearn

***HYMN #377**

I Want to Walk as a Child of the Light

HOUSTON

377 I Want to Walk as a Child of the Light

1 I want to walk as a child of the light. I want to fol - low
2 I want to see the bright-ness of God. I want to look at
3 I'm look-ing for the com - ing of Christ. I want to be with

Je - sus. God set the stars to give light to the world. The
Je - sus. Clear Sun of righ-teous-ness, shine on my path, and
Je - sus. When we have run with pa-tience the race, we

Refrain

star of my life is Je - sus.
show me the way to the Fa - ther. In him there is no dark-ness at
shall know the joy of Je - sus.

all. The night and the day are both a - like. The Lamb is the



PRAYERS OF THE PEOPLE

During the prayer there will be a time for you to give voice to your own prayers, after which the leader will say, “Lord, in your mercy,” or “Lord, we give thanks,” and the entire congregation responds, “Hear our prayer.”

THE LORD’S PRAYER

Our Father, who art in heaven, hallowed be thy name. Thy kingdom come, thy will be done, on earth as it is in heaven. Give us this day our daily bread; and forgive us our debts, as we forgive our debtors; and lead us not into temptation, but deliver us from evil. For thine is the kingdom and the power and the glory, forever. Amen.

OFFERING

We offer our time, talent and treasure in gratitude to God. Thank you for your gifts in support of our shared ministry. For your convenience, we offer these electronic giving options (fees involved): Use PayPal @RolandParkChurch or Text RPPC to 73256 and follow prompts.

Offertory O Death, Where is Thy Sting? G. F. Handel
Katie Hosier & Troy Koger, soloists

*O death, where is they sting? O grave, where is they victory?
 The sting of death is sin, and the strength of sin is the law.*

I Corinthians 15: 55-56

*Doxology (Hymn #606) OLD HUNDRETH

*Praise God, from whom all blessings flow; Praise God, all creatures here below;
 Praise God above, ye heavenly host; Praise Father, Son, and Holy Ghost. Amen.*

*Prayer of Dedication

*HYMN #700 I’m Gonna Live So God Can Use Me I’M GONNA LIVE

700 I'm Gonna Live So God Can Use Me

1 I'm gon-na live so (live so)
 2 I'm gon-na work so (work so) God can use me an - y -
 3 I'm gon-na pray so (pray so)
 4 I'm gon-na sing so (sing so)

where, Lord, an - y - time!
 (an - y - time!)
 I'm gon-na
 I'm gon-na
 I'm gon-na
 I'm gon-na

live so (live so)
 work so (work so) God can use me an - y -
 pray so (pray so)
 sing so (sing so)

where, Lord, an - y - time!
 (my Lord,) (an - y - time!)

***CHARGE AND BENEDICTION**

Following today's service you are invited to join us for a time of fellowship.

G2 C2/G G2 C2/G

May the love of the Lord rest up-on your soul.
 唯 願 神 的 愛 撫 慰 你 的 靈。

G2 C2/G D2 G2

May God's love dwell in you, through-out ev - ery day.
 每 時 刻 他 的 愛 住 在 你 心 裡，

G2 G2/B C6 G2/B Am7 C/D G2

May God's coun - te-nance shine up-on you and be gra-cious to you.
 他 的 榮 光 照 耀 你， 慈 愛 伴 隨 你，

G2 G2/B C6 G2/B Am7 C/D G2

May God's Spir - it be up-on you as you leave this place.
 無 論 何 處 他 的 靈 都 永 遠 伴 隨 你。

POSTLUDE

Trumpet tune in D
Esther Lee, organ

Charles Callahan

IN OUR THOUGHTS AND PRAYERS TODAY

*We look to our Lord for strength and healing. We look to each other to see our Lord in action. We remember all those in harm's way, those recovering from natural disasters, refugees and people in conflict, and facing new challenges. Among our church family: the friends and loved ones of **Rebecca Hanna** (mother of Pastor Mark Hanna), **Sandy Budd** (daughter-in-law of Margaret Budd), **Ruth Billet**, the community of Roland Park and **David & Danny Guillaume** along with the staff and children of Kay Papa Nou & Unity House.*

IN PREPARATION FOR NEXT SUNDAY

May 28, 2023
10:30 AM Worship
Pentecost
Special Music

ACKNOWLEDGEMENTS

Today's Liturgy is written by the Rev. Teri Petersen for the BibleWorm Podcast.

All today's music is used by permission: CCLI - Christian Copyright Licensing International 17205 SE Mill Plain Blvd, Suite 150, Vancouver, WA 98683 © 2020 CCLI, All rights reserved. *Permission to podcast / stream the music in this service obtained from ONE LICENSE, License # A-735403. All rights reserved.*

Pursuing Justice · Practicing Hospitality · Engaging Curious Faith

CHURCH STAFF

Mark W. Hanna, *Pastor*
Phillip Collister-Murray, *Director of Music*
Esther Lee, *Organist*
Shayla Redfearn, *Director of Christian Education*
Jennifer Ronald, *Director of Church Relations*
Caroline Mapp, *Bookkeeper*
Tony Mason, *Custodian*
Rebekah Johnson, *Childcare Coordinator*

pastor@rolandparkchurch.org
pcollister@towson.edu
estherlee1010@gmail.com
dce@rolandparkchurch.org
office@rolandparkchurch.org
bookkeeper@rolandparkchurch.org
custodian@rolandparkchurch.org

BOARD OF ELDERS

Nicole Allen (2025*)
Jean Brune (2024**)
Mary Carey (2023**)
Laura Cochran (2023**)
Dan Evans, *Treasurer*
Julie Evans (2024**)
Meghan Friedman (2024*)
Mark W. Hanna, *Moderator*
Destry Jarvis (2025**)
Phoebe Evans Letocha (2024**)
Kathy Matava (2025*)
Dave Patron (2025*)
Ginny Rutherford (2023**), *Clerk*
Richard Sigler (2023*)

BOARD OF DEACONS

Nick Allen (2025*)
Carol Bishop (2023**)
Barbara Jarvis (2023*)
Richard Letocha (2024**), *Moderator*
Holden McAleer (2024**)
Janice Moore (2024*)
David Patterson (2023*)
Elayne Provost (2025*)
Christine Tennies (2025*)
Erin Wilk (2024*)

* indicates 1st term, ** 2nd term



MORE LIGHT
PRESBYTERIANS

An inclusive and welcoming
congregation of the
Presbyterian Church (USA) and
the Presbytery of Baltimore.

ROLAND PARK PRESBYTERIAN CHURCH

ADDRESS

4801 Roland Avenue
Baltimore, MD 21210

OFFICE HOURS

Tuesday - Thursday 9 a.m. - 2 p.m.

WEBSITE

RolandParkChurch.org

PHONE

410.889.2001

EMAIL

office@rolandparkchurch.org

FOLLOW US

@RolandParkPC

